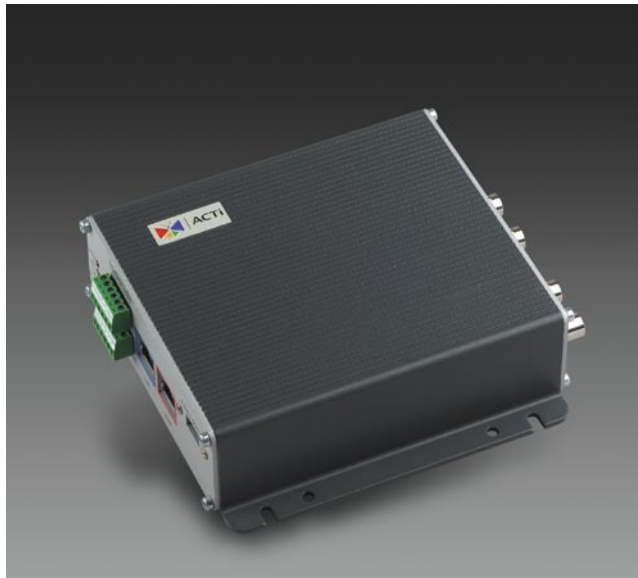




Wallmount Type Video Server with Two-channel And Two Way Audio Option

SED-2400 Series



- MPEG-4 ASP compliant compression
- CIF up to Full D1 resolution at 30/25 FPS
- Dual MPEG-4 video stream output via LAN and WAN (PPPoE supported) ports at the same time
- QoS enabled (L3) video streaming
- Digital time code embedded
- Motion detection
- Bi-directional audio supported (SED-2400, SED-2420)
- Isolated digital input and output supported

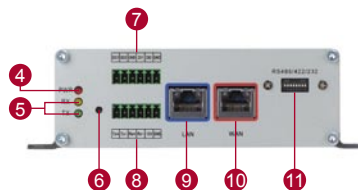
► **Transmit analog image into digital data with ultra high resolution**

The SED-2400 series are high resolution, Ethernet (LAN and WAN) ready digital video/audio transmission devices. They are specially designed to meet the increasing need for high quality, high reliability, real-time video streaming used in the field of surveillance and security.

The SED-2400 series are based on Arm9 SoC, MPEG-4 ASP compliant compression technology to compress the video stream, and transmit video/audio via LAN and WAN. They support automatic/manual frame rate control for concurrent video stream accessing in different bandwidth. The SED-2400 series provide RS-232 or RS-422 or RS-485, and also provide digital I/O data transmission over Ethernet for product integrators or solution providers. With this system, users can build digital remote surveillance system easily.



- 1 Channel number
- 2 Video iuput / output
- 3 Audio iuput / output



- 4 Power LED
- 5 RS-485 LED
- 6 Reset button
- 7 Digital input & digital output
- 8 Serial port input & power DC input
- 9 LAN port
- 10 WAN port
- 11 Serial port setting



SED-2400 Series

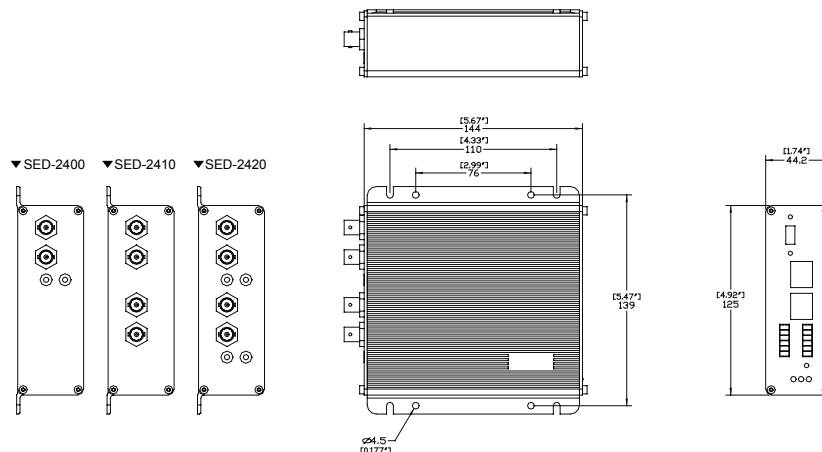
PRODUCT SPECIFICATION

		SED-2400	SED-2410	SED-2420
Video (Compression)	Compression	MPEG-4 ASP compliant		
	Picture Resolution	Full D1 (720 x 480 in NTSC, 720 x 576 in PAL); CIF (352 x 240 in NTSC, 352 x 288 in PAL) QCIF (160 x 112 in NTSC, 176 x 144 in PAL)		
	Bit Rate	28 K ~ 3M bps		
	Image Frame Rate	30 fps at full D1 resolution (NTSC); 25 fps at full D1 resolution (PAL)		
Video input	Composite Input	CVBS, 1.0Vp-p with 75 Ω loading, BNC connector	2, CVBS, 1.0Vp-p with 75 Ω loading, BNC connector	
Video Output	Composite Output	CVBS, 1.0Vp-p with 75 Ω loading, BNC connector	2, CVBS, 1.0Vp-p with 75 Ω loading, BNC connector	
Audio Input	Compression	8 kHz, Mono, PCM	N/A	8 kHz, Mono, PCM
	Audio Line Input	Unbalanced, 1.4 Vp-p, 1Vrms, 3.5 mm Jack	N/A	Unbalanced, 1.4 Vp-p, 1Vrms, 3.5 mm Jack
Audio Output	Compression	8 kHz, Mono, PCM	N/A	8 kHz, Mono, PCM
	Audio Line Output	Unbalanced, 1.4 Vp-p, 1Vrms, 3.5 mm Jack	N/A	Unbalanced, 1.4 Vp-p, 1Vrms, 3.5 mm Jack
Alarm	Input	2, TTL, terminal block		
	Output	2, TTL, terminal block		
Remote Control	Serial Port	RS-485: half duplex, terminal block; RS-422: full duplex, terminal block; RS-232: full duplex, terminal block		
External I/O	Reset Button	Factory default		
	LED	System status		
Network	LAN Port	Ethernet(10/100 Base-T), RJ-45 connector		
	WAN Port	Ethernet(10/100 Base-T), RJ-45 connector		
	Protocol	TCP, UDP, IP, HTTP, DHCP, PPPoE, RTP, RTSP		
Software	Web Browser	Microsoft Internet Explorer 6.0 or above		
	SDK	ActiveX control, C SDK		
	sec.urity	Password Protection : configured by the administrator		
Operating	Temperature	5 ~ 50 °C (40 ~ 122 °F)		
Power	Power Requirement	DC 12 V ±10%		
	Power Consumption	7.5 W		
Physical	Dimensions (WxHxD)	139 mm x 44.2 mm x 144 mm (5.47" x 1.74" x 5.67")		
	Weight	570 g (1.07 lb)		

ORDERING INFORMATION

Model Name	1 CH	2 CH	w/ Audio
SED-2400	V		V
SED-2410		V	
SED-2420		V	V

DIMENSION DIAGRAM



Unit: mm [inch]

* All specifications are subject to change without notice.
* All brand names and registered trademarks are the property of their respective owners.