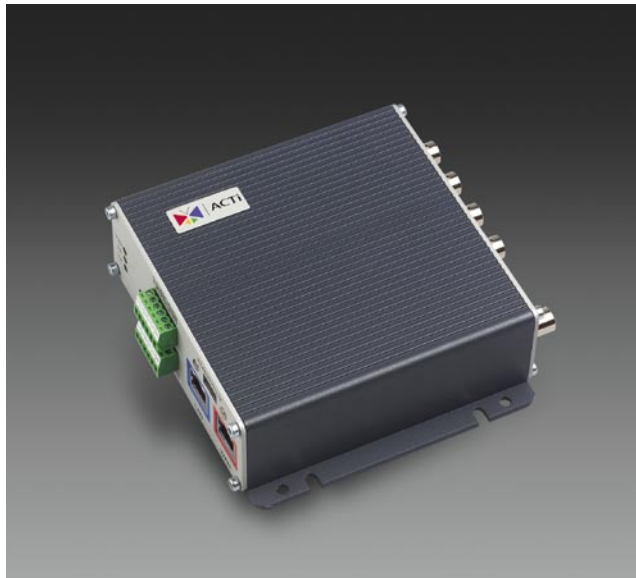


SED-2310Q/2320Q



- MPEG-4 ASP compliant compression
- CIF up to Full D1 resolution at 30/25 FPS
- Dual MPEG-4 video stream output via LAN and WAN (PPPoE supported) ports at the same time
- QoS enabled (L3) video streaming
- Real-time quad video
- Monitor output displays full-screen or quad image
- Digital time code embedded
- Motion detection
- Bi-directional audio supported (for SED-2320Q only)
- Isolated digital input and output supported
- Up to 4 analog video inputs blended into one digital MPEG-4 output stream

► Transmit analog image into digital data with ultra high resolution

The SED-2310Q/SED-2320Q is a SoC base, 4 channels Quad processor integrated, video compression and streaming device with excellent image quality and transmission performance. Via IP network such as LAN or WAN, the SED-2310Q/SED-2320Q supports concurrent 4 channels video tiling display in one real-time MPEG-4 streaming. It also provides RS-232 or RS-485 and digital I/O data transmission over Ethernet for product integrators or solution providers. SED-2310QT/SED-2320QT model can support industry temperature from -30 to 70 °C (-22 to 158 °F). With this highly integrated platform, SED-2310Q/SED-2320Q delivers a low cost advantage and reliable networking capability and it's the best solution for the increasing IP Security market.

Quad Display

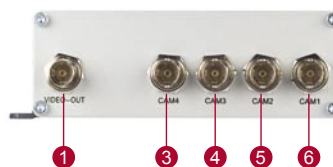


Full-screen



Number of Video Input	Total Stream Output	1 channel Display Only (resolution of the selected channel)	Quad Tiling Display (resolution of each channel)
1	1 D1 stream	D1	CIF
2	1 D1 stream	D1	CIF
3	1 D1 stream	D1	CIF
4	1 D1 stream	D1	CIF

SED-2310Q

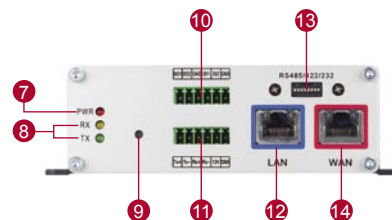


SED-2320Q

With audio



- 1 Video output
- 2 Audio input/output
- 3 CAM4 - analog input 4
- 4 CAM3 - analog input 3
- 5 CAM2 - analog input 2
- 6 CAM1 - analog input 1



- 7 Action LED indicator
- 8 Serial port LED indicator
- 9 Reset button
- 10 Digital input & digital output
- 11 Serial port input & DC 12V power input
- 12 LAN port
- 13 Serial port setting
- 14 WAN port



SED-2310Q/2320Q

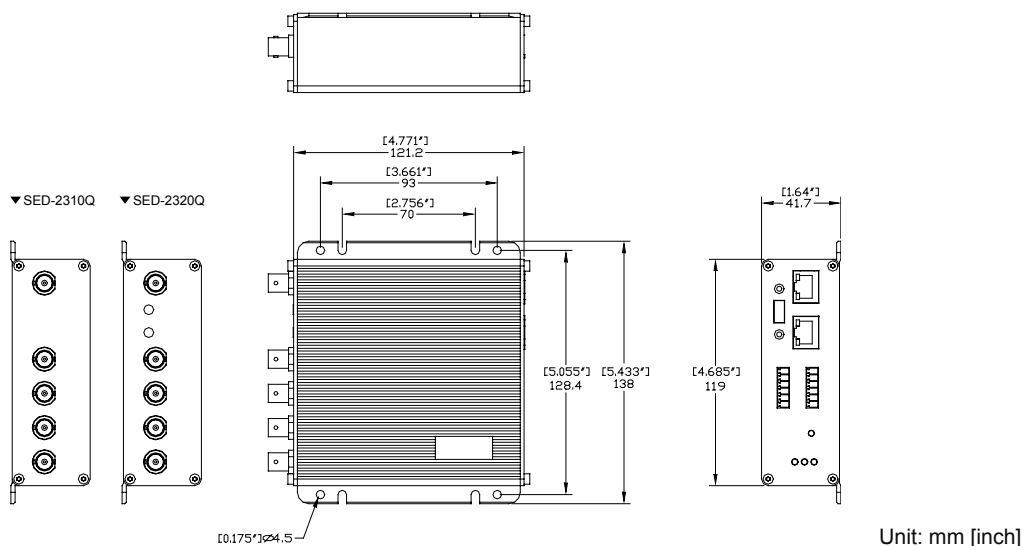
PRODUCT SPECIFICATION

		SED-2310Q	SED-2320Q
Video (Compression)	Compression	MPEG-4 ASP Compliant Compression	
	Picture Resolution	1 channel : Full D1 (720 x 480 in NTSC, 720 x 576 in PAL) 2 channel : CIF (352 x 240 in NTSC, 352 x 288 in PAL) 3 channel : CIF (352 x 240 in NTSC, 352 x 288 in PAL) 4 channel : CIF (352 x 240 in NTSC, 352 x 288 in PAL)	
	Bit Rate	28 K ~ 3 M bps	
	Image Frame Rate	30 fps at full D1 resolution (NTSC); 25 fps at full D1 resolution (PAL)	
Video input	Composite Input	4, CVBS, 1.0Vp-p with 75 Ω loading, BNC connector	
Video Output	Composite Output	1, CVBS, 1.0Vp-p with 75 Ω loading, BNC connector	
Audio Input	Compression	N/A	8 kHz, Mono, PCM
	Audio Line input	N/A	Unbalanced, 1.4 Vp-p, 1Vrms, 3.5 mm Jack
Audio Output	Compression	N/A	8 kHz, Mono, PCM
	Audio Line output	N/A	Unbalanced, 1.4 Vp-p, 1Vrms, 3.5 mm Jack
Alarm	Input	1, TTL, terminal block	
	Output	1, TTL, terminal block	
Remote Control	Serial Port	RS-485: half duplex, terminal block; RS-422: full duplex, terminal block; RS-232: full duplex, terminal block	
External I/O	Reset Button	Factory Default	
	LED	Power / serial port / network status	
	LAN Port	Ethernet (10/100Base-T), RJ-45 connector	
Network	WAN Port	Ethernet (10/100Base-T), RJ-45 connector	
	Protocol	TCP, UDP, IP, HTTP, DHCP, PPPoE, RTP, RTSP	
Software	Web Browser	Microsoft Internet Explorer 6.0 or above	
	SDK	ActiveX control, C SDK	
	Security	Password protection : configured by the administrator	
Operating	Temperature	5 ~ 50 °C (40 ~ 122 °F), SED-2310Q/SED-2320Q; -30 ~ 70 °C (-22 ~ 158 °F), SED-2310QT/SED-2320QT	
Power	Power Requirement	DC 12 V ±10%	
	Power Consumption	9.6 W	
Physical	Dimensions (WxHxD)	119 x 41.7 x 122 mm (4.69" x 1.65" x 4.81")	
	Weight	470 g (1.04 lb)	

ORDERING INFORMATION

Model Name	Full D1	w/ Audio	Extended Temperature
SED-2310Q	V		
SED-2310QT	V		V
SED-2320Q	V	V	
SED-2320QT	V	V	V

DIMENSION DIAGRAM



* All specifications are subject to change without notice.
* All brand names and registered trademarks are the property of their respective owners.