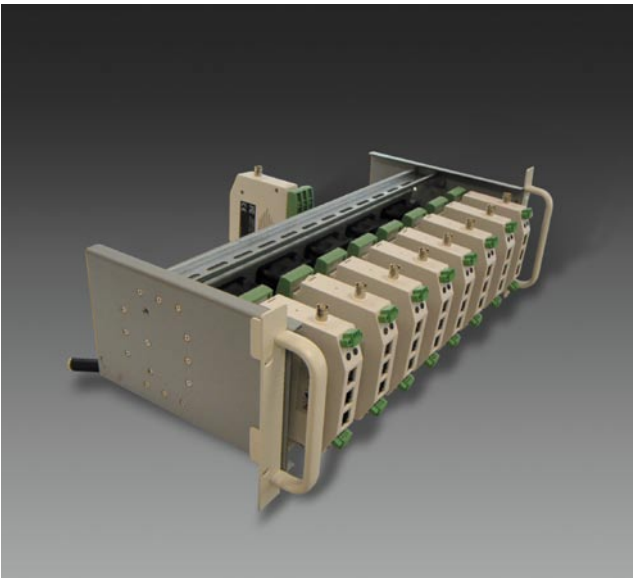




Rackmount Kit for
Din-rail Type Devices

RMK-1000



- 19-inch 3U Rackmount Din-rail design
- Standard 35 x 7.5 mm DIN rail
- 4 separate DIN rail mounting planes
- Dedicate fan for cooling ventilation
- Better and fast access for installation and maintenance
- Flexible mounting environment
- Minimal setup cost

The RMK-1000 is a 3U high 19-inch rackmount DIN Rail designed for easy access and install for those devices with the DIN Rail design such as ACTi's SED-210X video server. The RMK-1000 provides the space efficiency required in applications that need the central management for high volume of DIN Rail devices.

The RMK-1000 also provides a set of 5 fans cooling method for best ventilation. Each of the fans is replaceable if it reaches its end of life or by customer's request for higher CFM of air flow or lower dBA of noise.

For installing the ACTi's SED-210X, a DIN-rail mounting bracket is needed, It is recommended that a max. of 16 pieces of the SED-210X are installed for the best ventilation; there are 8 pieces in each side.

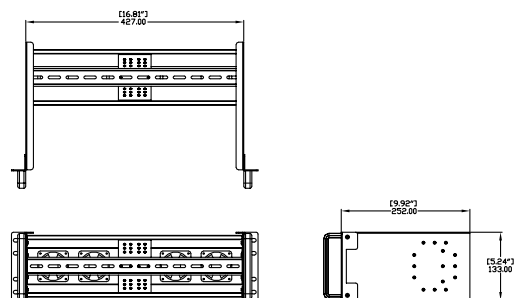
PRODUCT SPECIFICATION

Construction	Heavy-duty steel
Din Rail	4 (35 mm x 7.5 mm)
Applied Devices for RMK-1000	SED-210X
Max. Supported Device Quantity	16
Cooling Fan	5 (60 mm x 60 mm x 25 mm)
Power for FAN	Input : 100-240 Vac AC-DC adapter Output: 12 Vdc / 1.5 A
Color	Beige
Dimension (W x D X H)	427 mm x 133 mm x 252 mm (16.8" x 5.24" x 9.92")

ACCESSORY OPTIONS

- Adapter AX72-SL15A212-U 2Pin Terminal Block (USA/Japan) for RMK-100 0691-00020-005
- Adapter AX22-SL15A212-E 2Pin Terminal Block (Europe) for RMK-100 0691-00021-005
- Adapter AX32-SL15A212-B 2Pin Terminal Block (UK) for RMK-1000 0691-00022-005
- Adapter AX52-SL15A212-C 2Pin Terminal Block (China) for RMK-1000 0691-00023-005
- Adapter SW1201500-W04-1 2Pin Terminal Block (Australia) for RMK-1000 0691-00024-005

DIMENSION DIAGRAM



Unit: mm [inch]