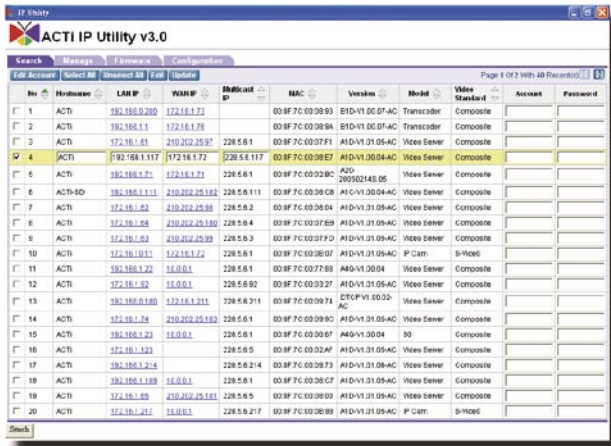




# IP Utility

## IP Network Utility And Management Tool



- Search and locate ACTi IP Surveillance products
- Search and report firmware version of the IP devices on the network
- Manages IP devices on-the-fly
- Upgrade firmware to multiple devices at the same time
- Backup and restore configuration to multiple devices at the same time

### ► Search and locate IP devices on the network

ACTi IP utility searches and locates ACTi's IP devices on the network, including video server, Transcoder IP camera and IP speed dome.

This utility is useful when the administrator forgets the IP address assigned; it also reports all camera names, LAN IP address, WAN IP address, Multicast IP address, MAC address, device type and firmware version of the devices on the network.

### ► Manage IP devices on the network

Administrator may manage IP devices on the network on following functions:

- Modify device name
- Modify LAN/WAN IP address
- Modify multicast setting

### ► Global firmware upgrades

Manages multiple devices at the same time:

- Upgrade firmware to multiple devices
- Update configuration to multiple devices

## PRODUCT SPECIFICATION

Supported IP Devices	
Video Server	SED-2000 video server series
Transcoder	SED-3000 Transcoder series
IP Camera	CAM-5000 IP Camera Series
IP Speed Dome	CAM-6000 IP Speed Dome Series
IP Dome	CAM-7000 IP Dome series
Search and Locate IP Devices	
Name	Camera Name
LAN IP	LAN IP address
WAN IP	WAN IP address
Multicast IP	Multicast IP address
MAC	MAC address

Type	IP Device Type
Firmware	Firmware version
Manage IP Devices	
Device Name	Modify device name
Network Setting	Modify LAN / WAN / Multicast IP address
Global Updates	
Firmware Upgrade	Upgrade firmware to multiple devices at the same time
Configuration Updates	Update configuration to multiple devices at the same time